



Installing the ALPHA USB Driver  
for use with  
Vitalograph Reports

## TABLE OF CONTENTS

<b>TABLE OF CONTENTS .....</b>	<b>2</b>
<b>1 TURN ON THE ALPHA DEVICE .....</b>	<b>3</b>
<b>2 CONNECT USB CABLE TO PC AND THEN TO ALPHA DEVICE .....</b>	<b>3</b>
<b>2.1 New Hardware Found .....</b>	<b>3</b>
<b>2.2 Choose the Search and Installation Options.....</b>	<b>4</b>
<b>2.3 The PC will search for the driver in the location specified.....</b>	<b>5</b>
<b>2.4 Continue Anyway .....</b>	<b>5</b>
<b>2.5 Software Driver Installs.....</b>	<b>6</b>
<b>2.6 Installation Complete.....</b>	<b>7</b>
<b>3 IMPORTANT NOTE: .....</b>	<b>8</b>

## 1 TURN ON THE ALPHA DEVICE

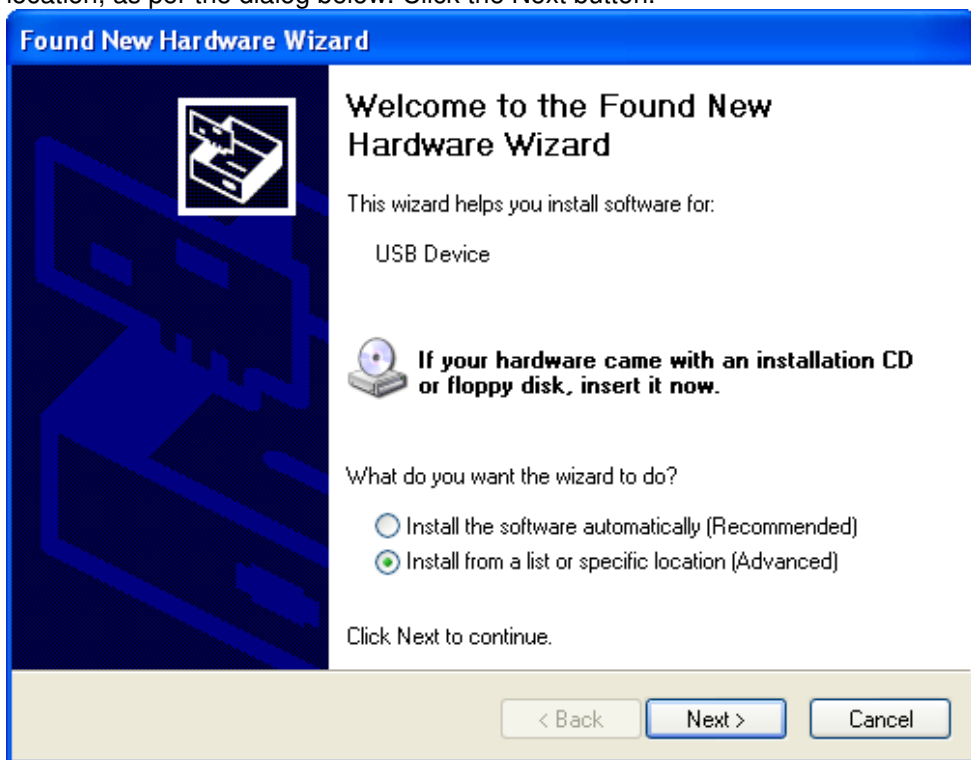
Important – Before the USB driver for the ALPHA device is installed, the device should be switched on.

## 2 CONNECT USB CABLE TO PC AND THEN TO ALPHA DEVICE

Connect the USB cable (supplied with the ALPHA) into an available USB slot on the PC. Then connect the other end of the cable into the ALPHA device, which should already be switched on. Once connected the PC will recognise that new hardware has been connected.

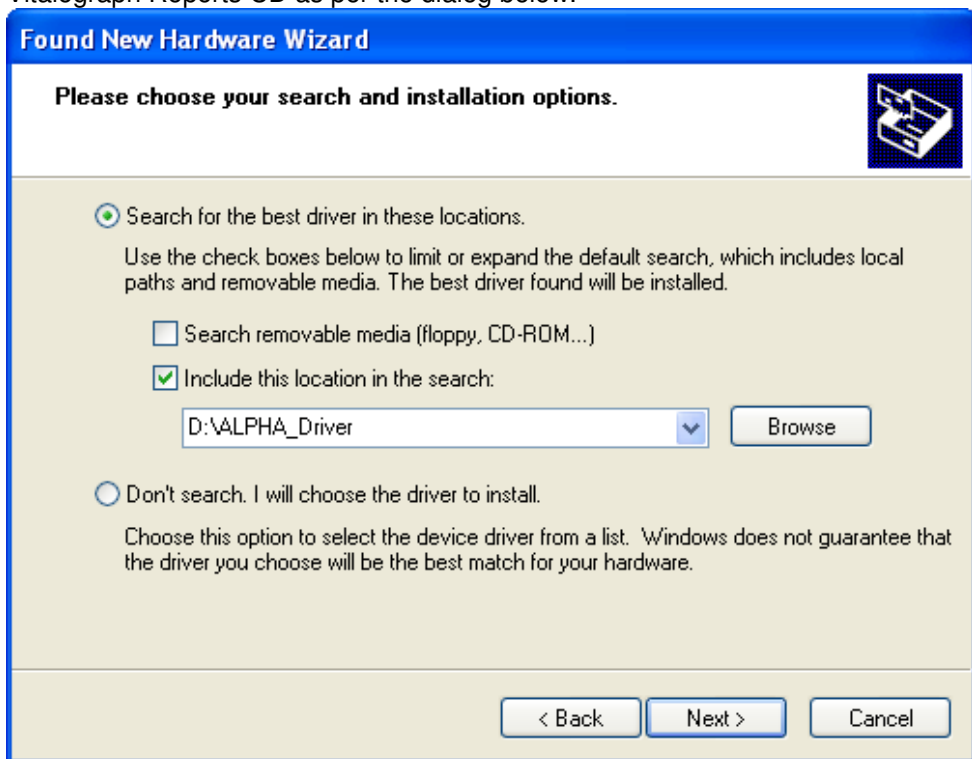
### 2.1 New Hardware Found

When prompted to do so, choose the option to Install the driver from a specific location, as per the dialog below. Click the Next button.

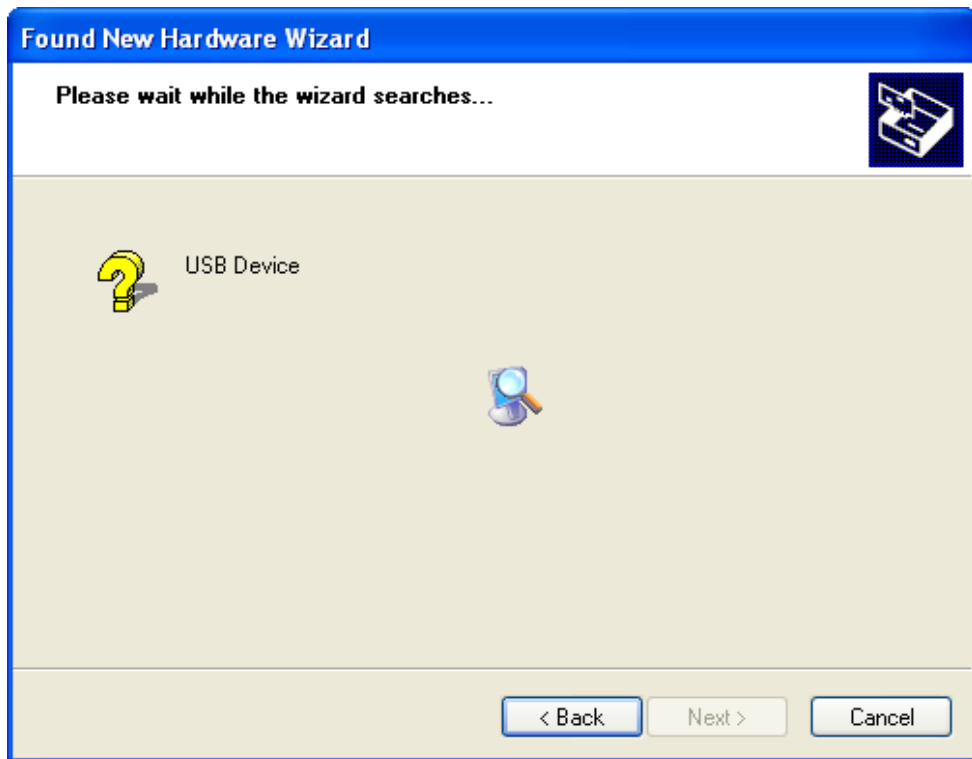


## 2.2 Choose the Search and Installation Options

When prompted, choose the option to search for the best driver in a specified location. Tick the box to include a specific location in the search for the best driver. Click the “Browse” button and browse to the ALPHA\_Driver folder on the Vitalograph Reports CD as per the dialog below.



## 2.3 The PC will search for the driver in the location specified



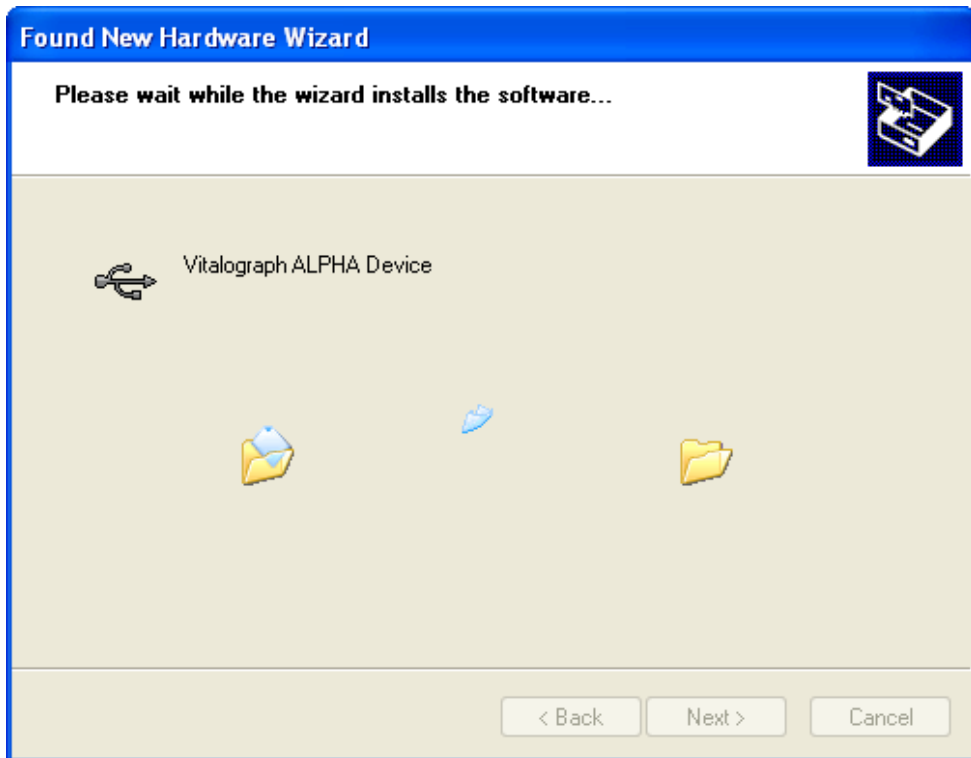
## 2.4 Continue Anyway

When the software driver for the ALPHA device has been found by the PC, the following dialog shall appear. Choose "Continue Anyway" to proceed.



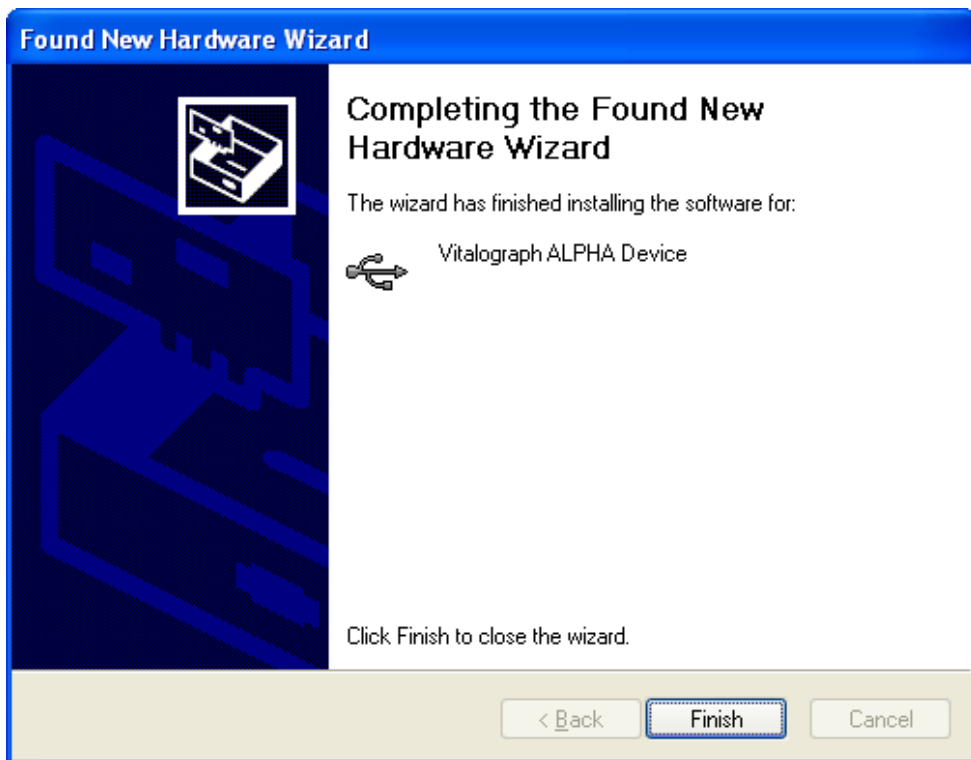
## 2.5 Software Driver Installs

The PC will continue to install the software driver as per the dialog below



## 2.6 Installation Complete

When the driver has been successfully installed, a dialog will be displayed to indicate this and you will be prompted to Finish the installation. Click Finish. The ALPHA device is now ready to use with the Vitalograph Reports.



### 3 IMPORTANT NOTE:

When using the ALPHA device with Vitalograph reports, to ensure a proper connection with the PC it is always advisable to turn on the ALPHA device and the PC, before connecting the USB cable to the device.

If you loose connection with the ALPHA device for any reason:

1. Make sure the USB cable is securely connected to the PC.
2. Switch off the ALPHA device.
3. Plug out the USB cable from the device.
4. Switch back on the ALPHA device
5. Plug the cable back into the ALPHA device